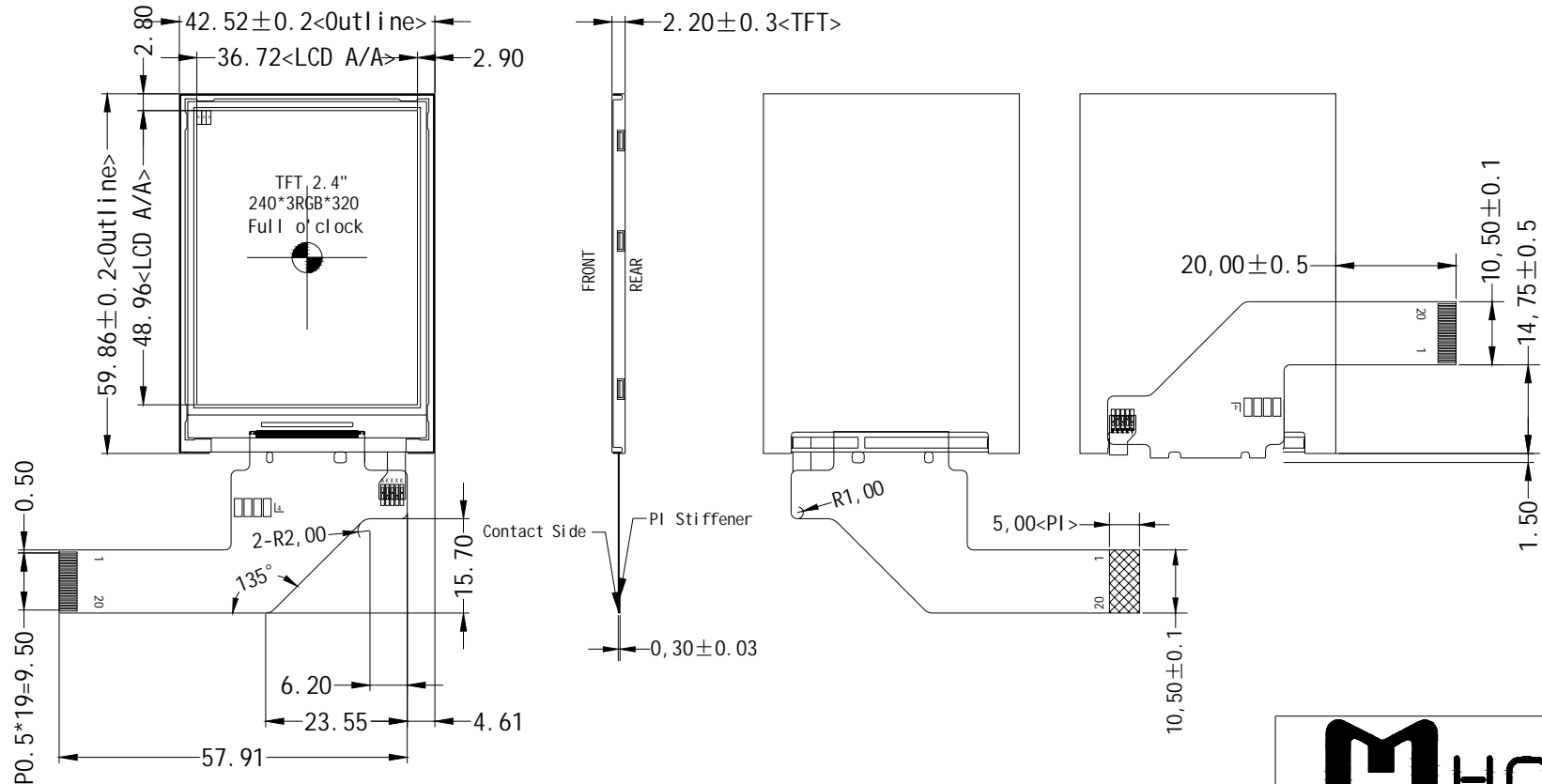


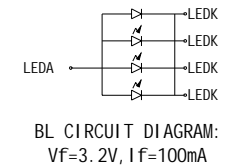
\*\*\* Do not display the fixed pattern for a long time when using a normally black panel, as it may cause image sticking due to the LCM structure. If the screen is displayed in fixed mode, use a screen saver. It is recommended to display the fixed mode in less than 2 minutes or less.


\*Modify FPC shape



Pin_SIGNAL	
1	GND
2	RTP_XR
3	RTP_YD
4	RTP_XL
5	RTP_YU
6	NC
7	GND
8	DON
9	DOP
10	GND
11	DCKN
12	DCKP
13	GND
14	RESX
15	IOVCC
16	VCI
17	GND
18	LED_A
19	LED_K
20	GND

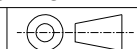
*1. LCD Display Type	TFT, Transmissive, Normally Black		
*2. Viewing Direction	Full 0' Clock (U80/D80/L80/R80)	*6. Storage Temp	-30° C~80° C
*3. Interface	MIPI_1L	*7. Driver IC	JD9852
*4. Operating Voltage	VCI=2.8V, IOVCC=1.8V(Typ)	*8. Backlight	WHITE Vf=3.2V If=100mA(Typ)
*5. Operating Temp	-20° C~70° C	*9. LCM Brightness	800 cd/m <sup>2</sup> (Typ)





# HOTMI

Dwg Title: **TFT-H024A9QVI FT8N20**

Scale: 1:1	Unit: mm	Tol: ±0.3	
Ver: V1	Drawn: Liu	Date: 2020-04-20	